

The background of the slide is a solid brown color with a pattern of faint, stylized autumn leaves in various shades of brown and tan. The leaves are scattered across the frame, some overlapping, creating a textured, seasonal feel.

# Surviving the State Survey

Meg Goodyear, ADON  
Cook Healthcare

# The State just walked in, what do you do?

- Stay Calm!
- Don't Panic!
- Smile!
- Relax!



# Care Needs

- Know where your residents are
- **CARE GUIDES:** Know what they need
- Respond to call lights promptly
- **USE YOUR GAIT BELT!!!**



# Provide Dignity & Privacy

- Knock on doors
- Pull curtains and shut doors
- Close window blinds when doing cares
- Cover all parts when going to shower
- Keep shower doors closed at all times
- Do not discuss residents' conditions in corridors or where others may hear



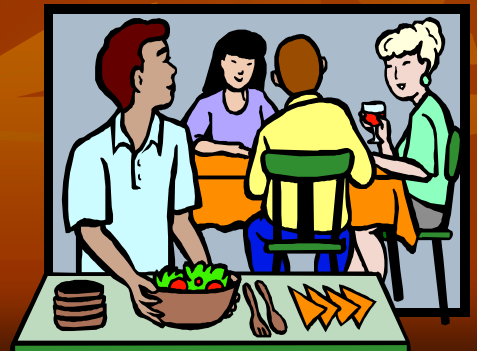
# Infection Control

- Wash your hands and use hand sanitizer
- Do not carry linens against your body
- Do not put soiled linen or wet briefs on the floor
- Use proper cough and sneeze etiquette
- Report any signs of infection to your nurse
- Don't come to work sick
- Wash your hands, wash your hands, wash your hands.



# Mealtime

- Serve all residents at the same table together
- Make sure the food matches the diet
- Visit with the residents and not with each other
- Be sure to offer substitutes
- Remember to use adaptive devices
- Let the nurse know if a resident is not eating



# Mealtime

- Do not eat or drink in the dining rooms
- Do not chew gum when feeding residents
- Do not eat the residents' food
- Wipe residents' faces after eating



# Food Safety



- Wash hands prior to serving food
- No gloves when just serving plates
- Wear gloves when directly touching food
- Food must be reheated to 165°
- A can of soup may be heated to 135°
- Wash hands after serving food
- Do not leave snacks sitting out on counters
- All food in refrigerators must be dated

# Observations of Care

- Surveyors may ask to watch you giving resident care.
- What do you do if they ask to observe personal care?
- What do you do if they ask you something about a resident that you don't know?



# Fire & Disaster

- What do you do when there is a fire?
- What does RACE stand for?
- What does PASS stand for?
- What do you do if a resident appears to be missing?



# Resident Abuse

- What do you do if you witness or suspect resident abuse?



# FACT OR FICTION?

- C.N.A.s may turn off a feeding pump.

**FICTION**

- C.N.A.s may provide catheter care.

**FACT**

- C.N.A.s may apply creams that require a physician's order if asked by the nurse.

**FICTION**

# FACT OR FICTION?

- Statistics show that an average 100-bed nursing home reports 100-200 falls annually

**FACT**

- When laying a resident down, a leg bag must be changed to Foley bag.

**FACT**

- C.N.A.s may give a resident medication if the nurse says it's ok.

**FICTION**

# FACT OR FICTION?

- It is safe for one person to use a Hoyer lift

**FICTION**

- You must answer a chair or bed alarm even if it's not your assigned resident

**FACT**

- Toothpaste, mouthwash, and lotions may be kept by the sink

**FICTION**

# CONCLUSION

- Don't panic when the surveyors are here
- Be helpful and courteous
- Know your residents' needs
- Adhere to residents' diets and dietary rules
- Observe standard precautions
- Know your role in case of fire or disaster
- Protect resident privacy, and report abuse
- **SMILE!!! Because we LOVE our RESIDENTS!!!**



# Reference

- Arizona Department of Health Services Office of Long Term Care Licensing, (2008). *C.N.A. survey survival guide: Tips for surviving the state survey and providing care every day!!!*